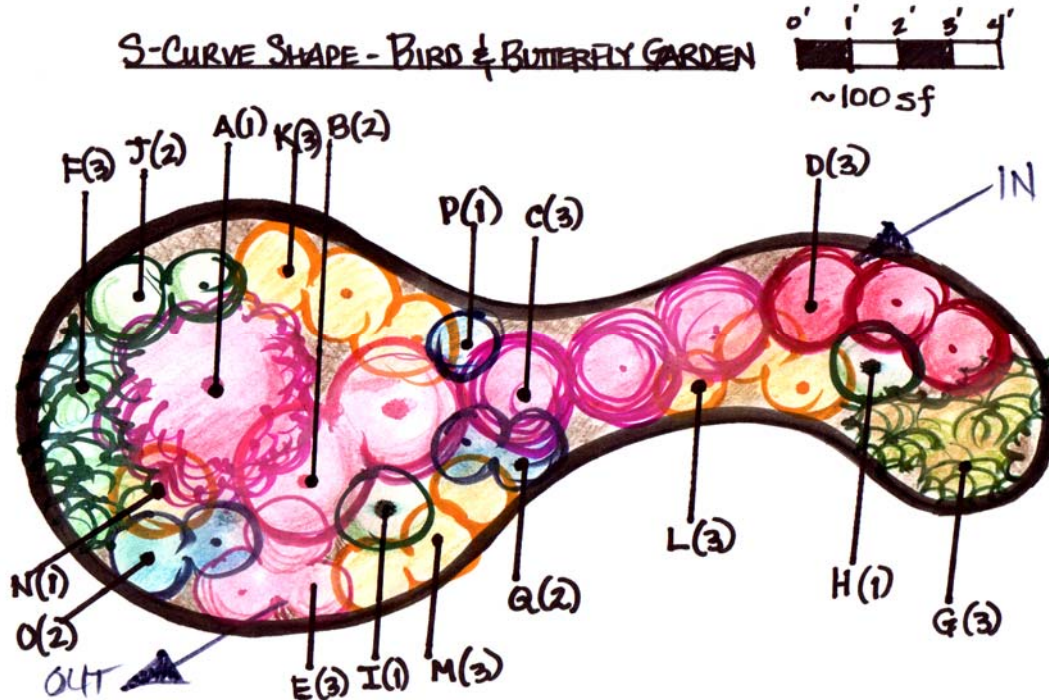


Bird and Butterfly Rain Garden

Sketch:



Description:

This ~100 square foot design is intended for rain gardens with depths of 5 to 8 inches. The majority of selected plants are native to Ohio.

For Sun or Part Shade, selected plants include butterfly host plants, nectar plants, seed producers for birds, and grasses as a source of cover. A curving 'backbone' of pink/red plants is bordered by yellow and blue flowering perennials to create a red/yellow/blue color triad blooming throughout the seasons. A few eye-catching pops of white flowering perennials are scattered throughout the garden. Low grasses edge the flowers on either end, lending a sense of order.

In Full Shade, the curving backbone of the garden is a selection of white flowering plants, or an alternate hedge of green hued foliage plants. Pink and blue nectar and seed producing plants complete a cool color scheme. A berry producing specimen shrub is featured in each Full Shade garden. Shade loving ferns and sedges edge the garden and add textural interest.

Leave the seeds and cover over winter, cutting the perennials and grasses back in early spring .

Sun Selections - Bird and Butterfly Rain Garden:

	LATIN NAME	COMMON NAME	LIGHT	MOISTURE	QTY
A	Hibiscus moscheutos	Moy Grande Hardy Hibiscus	○	☞ ☞ ☞	1
B	Asclepias incarnata	Swamp Milkweed	○	☞ ☞ ☞	2
C	Eupatorium dubium	Baby Joe Pye Weed	○ ●	☞ ☞ ☞	3
D	Lobelia cardinalis	Cardinal Flower	○ ●	☞ ☞ ☞	3
E	Phlox glaberrima	Morris Berd phlox	○	☞ ☞ ☞	3
F	Schizachyrium scoparium	Little Bluestem	○	☞ ☞ ☞	3
G	Sporobolis heterolepis	Prairie Dropseed	○	☞ ☞ ☞	3
H	Chelone glabra	Turtlehead	○ ●	☞ ☞ ☞	1
I	Liatris spicata 'Alba'	White liatris	○	☞ ☞ ☞	1
J	Penstemon digitalis	Beardtongue	○ ●	☞ ☞ ☞	2
K	Helianthus angustifolius	Low Down Narrow Leaved Sunflower	○ ●	☞ ☞ ☞	3
L	Coreopsis lanceolata	Lanceleaf Coreopsis	○	☞ ☞ ☞	3
M	Solidago	Little Lemon Goldenrod	○	☞ ☞ ☞	3
N	Coreopsis palmata	Plains Coreopsis	○	☞ ☞ ☞	1
O	Lobelia siphilitica	Great Blue Lobelia	○ ●	☞ ☞ ☞	2
P	Aster oblongifolius	October Skies	○	☞ ☞ ☞	1
Q	Iris Versicolor	Blue Flag Iris	○ ●	☞ ☞ ☞	2

ALTERNATES:

37

L,M	Zizia aurea	Golden Alexanders	○ ●	☞ ☞ ☞	--
O	Phlox paniculata	blue/purple Garden Phlox	○	☞ ☞ ☞	--

Part Shade Selections - Bird and Butterfly Rain Garden:

	LATIN NAME	COMMON NAME	LIGHT	MOISTURE	QTY
A	Clethra alnifolia	Ruby Spice Summersweet	○ ●	☞ ☞ ☞	1
B	Eupatorium purpurea	Sweet Joe Pye Weed	○ ●	☞ ☞ ☞	2
C	Echinacea purpurea	Rubinstern Purple Coneflower	○ ●	☞ ☞ ☞	3
D	Lobelia cardinalis	Cardinal Flower	○ ●	☞ ☞ ☞	3
E	Phlox stolonifera	Homefires Woodland Phlox	○ ●	☞ ☞ ☞	3
F	Carex grayi	Burr Sedge	○ ●	☞ ☞ ☞	3
G	Carex laxiculmis	Bunny Blue Spreading Sedge	○ ●	☞ ☞ ☞	3
H	Chelone glabra	Turtlehead	○ ●	☞ ☞ ☞	1
I	Aruncus dioicus	Goat's Beard	○ ●	☞ ☞ ☞	1
J	Iris cristata	Tennessee White Crested Iris	○ ●	☞ ☞ ☞	2
K	Caltha palustris	Marsh Marigold	○ ●	☞ ☞ ☞	3
L	Zizia aurea	Golden Alexanders	○ ●	☞ ☞ ☞	3
M	Solidago caesia	Bluestem Goldenrod	○ ●	☞ ☞ ☞	3
N	Helianthus microcephalus	Small-headed Sunflower	○ ●	☞ ☞ ☞	1
O	Lobelia siphilitica	Great Blue Lobelia	○ ●	☞ ☞ ☞	2
P	Aster cordifolius	Avondale Blue Wood Aster	○ ●	☞ ☞ ☞	1
Q	Iris cristata	Powder Blue Giant Crested Iris	○ ●	☞ ☞ ☞	2

ALTERNATES:

37

O,Q	Camassia cilioides	Wild Hyacinth	○ ●	☞ ☞ ☞	--
K,L	Senecio aurea	Golden Ragwort	○ ●	☞ ☞ ☞	--
B-D	Chelone lyonii	Hot Lips Turtlehead	○ ●	☞ ☞ ☞	--

Full Shade Selections - Bird and Butterfly Rain Garden:

	LATIN NAME	COMMON NAME	LIGHT	MOISTURE	QTY
A	<i>Viburnum prunifolium</i>	Blackhaw viburnum	○ ●	☞	1
C	<i>Actaea racemosa</i>	Black Cohosh, Snakeroot	◐ ●	☞☞	3
D	<i>Hydrangea arborescens</i>	Annabelle Smooth Hydrangea	◐ ●	☞☞	1
E	<i>Phlox stolonifera</i>	Homefires Woodland Phlox	◐ ●	☞ ☞☞	2
F	<i>Carex grayi</i>	Burr Sedge	◐ ●	☞ ☞☞	3
G	<i>Carex laxiculmis</i>	Bunny Blue Spreading Sedge	◐ ●	☞ ☞☞	3
H	<i>Lobelia cardinalis</i>	Cardinal Flower	○ ●	☞☞	2
I	<i>Carex muskingumensis</i>	Little Midge Mini Palm Sedge	●	☞☞	5
J	<i>Aquilegia canadensis</i>	Wild Columbine	◐ ●	☞ ☞☞	1
K	<i>Aster cordifolius</i>	Avondale Blue Wood Aster	◐ ●	☞ ☞☞	2
L	<i>Iris cristata</i>	Powder Blue Giant Crested Iris	◐ ●	☞ ☞☞	2
M	<i>Geranium maculatum</i>	wild geranium	◐ ●	☞	3
O	<i>Blephilia hirsuta</i>	hairy wood mint	●	☞☞	1
P	<i>Athyrium filix-femina</i>	Lady Fern	○ ●	☞☞	1
Q	<i>Arisaema triphyllum</i>	Jack-in-the-Pulpit	◐ ●	☞	2

ALTERNATES:

A	<i>Cornus racemosa</i>	Gray Dogwood	○ ●	☞ ☞☞	--
A	<i>Lindera benzoin</i>	Spicebush	◐ ●	☞☞	--
C	<i>Osmunda cinnamomea</i>	Cinnamon Fern	◐ ●	☞ ☞☞	--
D	<i>Diervilla lonicera</i>	Dwarf Bush Honeysuckle	○ ●	☞ ☞☞	--

Key:

LIGHT LEVEL	○ ◐ ● ●	Full Sun Part Sun/Part Shade Full Shade
MOISTURE LEVEL	☞ ☞☞ ☞☞☞	Dry Average Moist to Wet

