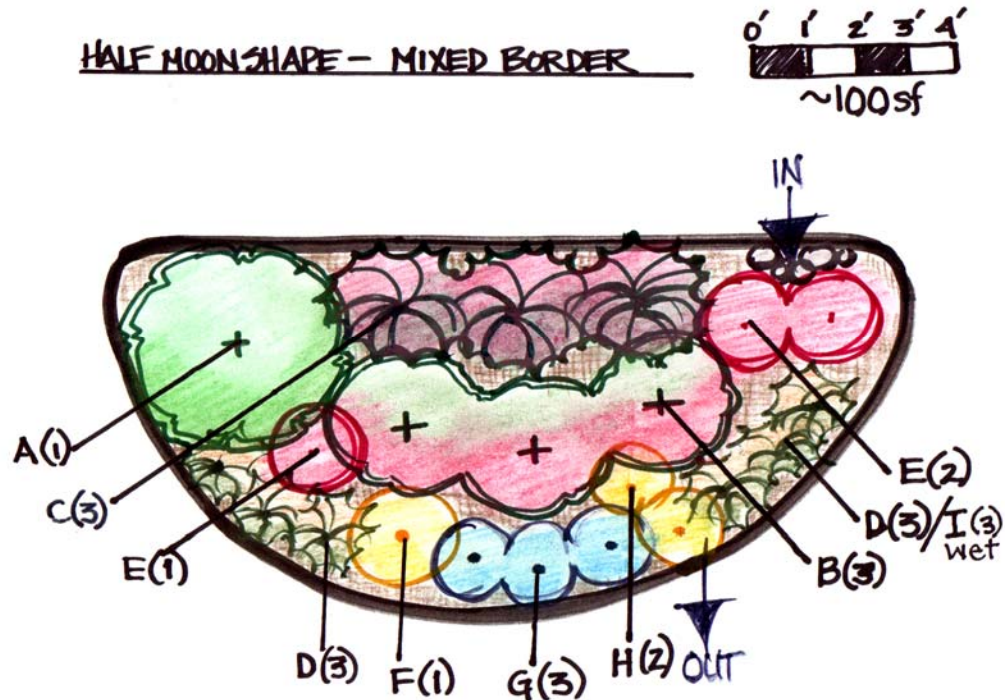


## Mixed Border Rain Garden

Sketch:



### Description:

This ~100 square foot design is intended for rain gardens with depths of 5 to 8 inches. The majority of plants selected are native to Ohio.

The Mixed Border Rain Garden has a spine of woody shrubs, with grasses and colorful perennials arranged strategically for balance, and for color or texture combinations. Blooms, foliage or berries will color each season.

In Sun, the feature shrubs are either 'Red Sprite' Hollies, or a dark bronze Ninebark paired with a white flowering native shrub. Grasses are used for structure, color, texture and as edging.

In Shade, ferns and the native evergreen Arborvitae (part shade) or Hemlock (more shade) take the place of grasses. The Shade garden features Spicebush for its golden fall color and as food for the Spicebush Swallowtail caterpillar.

## Sun Selections - Mixed Border Rain Garden:

	LATIN NAME	COMMON NAME	LIGHT	MOISTURE	QTY
A	Ilex verticillata male	Jim Dandy Holly	☉ ☌	☞ ☞	1
B	Ilex verticillata female	Red Sprite Holly	☉ ☌	☞ ☞	3
C	Panicum virgatum	prairie Fire Switch Grass	☉ ☌	☞ ☞	3
D	Sporobolus heterolepis	Prairie Dropseed	☉	☞ ☞	3
E	Lobelia cardinalis	Cardinal Flower	☉ ●	☞☞☞	3
F	Coreopsis palmata	Plains Coreopsis	☉	☞	1
G	Geranium	x Rozanne	☉ ☌	☞	3
H	Helianthus angustifolius	Low Down sunflower	☉ ☌	☞ ☞	2
I	Carex stricta	Tussock Sedge	☉ ☌	☞☞☞	3
add	Iris Versicolor	Blue Flag Iris	☉ ☌	☞☞☞	2

ALTERNATES:

24

A	Physocarpus opulifolius	Coppertina Ninebark	☉ ☌	☞ ☞	--
B	Hydrangea arborescens	Hayes Starburst Smooth Hydrangea*	☌ ●	☞☞☞	--
B	Aronia melanocarpa	Iroquois Beauty Black Chokeberry	☉ ☌	☞ ☞	--

\* Will handle sun with consistent moisture

## Shade Selections - Mixed Border Rain Garden:

	LATIN NAME	COMMON NAME	LIGHT	MOISTURE	QTY
A	Lindera benzoin	Spicebush	☌ ●	☞ ☞	1
B	Hydrangea Arborescens	Smooth Hydrangea	☌ ●	☞☞☞	3
C	Thuja Occidentalis	Danica Dwarf Globe Arborvitae	☉ ☌	☞ ☞	3
D	Polystichum acrostichoides	Christmas Fern	☌ ●	☞ ☞	3
E	Lobelia cardinalis	Cardinal Flower	☉ ●	☞☞☞	3
F	Caltha palustris	Marsh Marigold	☌ ●	☞☞☞	1
G	Phlox stolonifera	Purple Woodland Creeping Phlox	☌ ●	☞ ☞	3
H	Solidago caesia	Bluestem Goldenrod	☉ ●	☞ ☞	2
I	Onoclea sensibilis	Sensitive fern	☌ ●	☞☞☞	3
add	Mertensia virginica	Virginia Bluebells	☌ ●	☞☞☞	2

ALTERNATES:

24

C	Tsuga canadensis	Gentsch White dwarf Hemlock**	☌ ●	☞ ☞	--
---	------------------	-------------------------------	-----	-----	----

\*\* needs moist but well drained, slightly acidic soil

## Key:

LIGHT LEVEL	☉ ☌ ●	Full Sun Part Sun/Part Shade Full Shade
MOISTURE LEVEL	☞ ☞☞ ☞☞☞	Dry Average Moist to Wet

