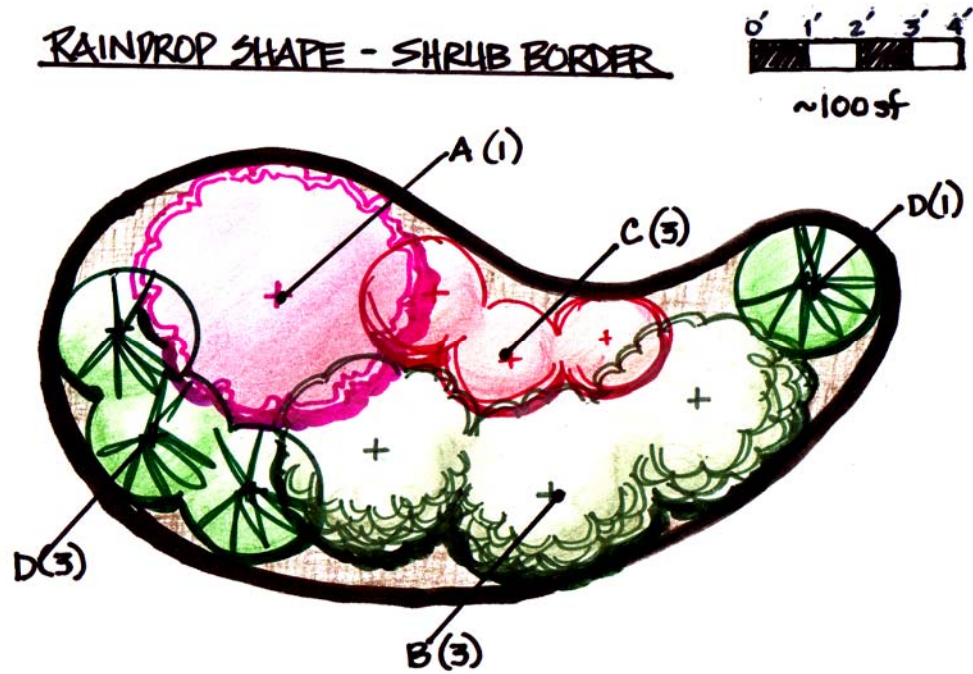


Shrub Border Rain Garden

Sketch:



Description:

This ~100 square foot design is intended for rain gardens with depths of 5 to 8 inches. The majority of plants selected are native to Ohio, or to the midwest.

Four different types of shrubs are arranged in this 100 sf garden so each season will have some interest. Selections include shrubs that bloom in spring or summer, have bright fall foliage, produce berries in fall/winter, have red winter stems, or are evergreen.

There are a variety of feature shrubs to choose from for Sun/Part Shade and for Full Shade. When selecting alternates, give consideration to choices that offer a different color, texture or seasonal interest than the other selections in the composition.

Sun/Part Shade Selections - Shrub Border Rain Garden:

	LATIN NAME	COMMON NAME	LIGHT	MOISTURE	QTY
A	Physocarpus opulifolius	Coppertina Ninebark	☉ ☌	☞ ☞	1
B	Cornus sericea	Isanti compact Red Twig Dogwood	☉ ☌	☞	3
C	Itea virginica	Little Henry Dwarf Sweetspire	☉ ●	☞ ☞	3
D	Thuja Occidentalis	Danica Dwarf Globe Arborvitae	☉ ☌	☞ ☞	4

11

ALTERNATES:

A	Coronus sericea	Cardinal Red Osier Dogwood	☉ ☌	☞	--
A	Viburnum trilobum	Redwing Cranberry Bush	☉ ☌	☞ ☞	--
A	Ilex verticillata male	Jim Dandy Holly	☉ ☌	☞ ☞	--
B	Ilex verticillata female	Red Sprite Holly	☉ ☌	☞ ☞	--
B	Aronia melanocarpa	Viking Black Chokeberry	☉ ☌	☞ ☞	--
C	Aronia melanocarpa	Iroquois Beauty Black Chokeberry	☉ ☌	☞ ☞	--
B,C	Diervilla lonicera	Dwarf Bush Honeysuckle	☉ ●	☞ ☞	--
C	Clethra alnifolia	Hummingbird dwarf Summersweet	☌	☞	--
C	Cornus sericea	Kelsey dwarf Red Twig Dogwood	☉ ☌		--

Full Shade Selections - Shrub Border Rain Garden:

	LATIN NAME	COMMON NAME	LIGHT	MOISTURE	QTY
A	Lindera benzoin	Spicebush	☌ ●	☞ ☞	1
B	Hydrangea arborescens	Hayes Starburst or White Dome	☌ ●	☞	3
C	Itea virginica	Little Henry dwarf Sweetspire	☉ ●	☞ ☞	3
D	Tsuga canadensis	Gentsch White dwarf Hemlock *	☌ ●	☞ ☞	4

11

ALTERNATES:

A	Aesculus parviflora	Bottlebrush Buckeye	☉ ●	☞	--
A	Viburnum prunifolium	Blackhaw viburnum	☉ ●	☞ ☞	--
B,C	Diervilla lonicera	Dwarf Bush Honeysuckle	☉ ●	☞ ☞	--

* needs moist but well drained, slightly acidic soil

Key:

LIGHT LEVEL	☉ ☌ ●	Full Sun Part Sun/Part Shade Full Shade
MOISTURE LEVEL	☞ ☞ ☞	Dry Average Moist to Wet

